



IntelliClip[®] Targeted Grid Placement Technology

Quanex manufactures IntelliClip muntin end clips with its targeted grid placement technology that removes the opportunity for misaligned grids due to operator error.

IntelliClips will save you time and money while providing these other great features and benefits:

- **Proven Patented Technology** – IntelliClips are produced with industry tested and proven polymers for clean IG performance.
- **Unique Fin Design** – Offers quick, secure placement of grids into pre-notched locations on spacer. Fin design centers muntins within the airspace.
- **Secure Anchoring System** – Ensures that the end clip will stay securely in the muntin bar and in the spacer system.
- **Improved Quality** – Muntin bar location slit can be automatically produced as the spacer is robotically applied to the glass with razor-edge accuracy.
- **Pleasing Aesthetic Appearance** – Translucent plastic profile available and minimum exposed surface area keeps focus on the window design and not on the clip.
- **Size and Color Options** – IntelliClips are available in a variety of sizes and for the full range of air spaces. Minimum order of one box per size (5,000 pieces).

Metal Clips

Clips for any application (Manual, Semi-automated or Fully-automated)

A B C D					A B C D				
Rolled Formed Muntin Bar Style & Sizes	Part #	Offset	Color	Accessories & Options	Rolled Formed Muntin Bar Style & Sizes	Part #	Offset	Color	Accessories & Options
1/4" x 5/16" (Inside) 0.200" x 0.270"	1	N,S,M,L	C,B,W	SW-CON,SW, BT, IT					
1/4" x 3/8" (Inside) 0.210" x 0.320"	2	N,S,M,L	C,B,W	SW-CON, SW, BT, IT					
7/16" x 3/8" (Inside) 0.380" x 0.320"	9	N,S,M,L	C,B,W	BT, IT	8 x 1.5mm Helima	6	N,S,M,L	C,B,W	SW-CON, SW, BT, IT
1/4" x 1/2"	42	S,M,L	C,B,W	BT, IT, BIT	WM 1805 Helima	4	N,S,M,L	C,B,W	BT, IT, BIT
3/8" x 7/16"	38	S,M,L	C,B,W	BT, IT, BIT	WM 1808	7	N,S,M,L	C,B,W	SW-CON, SW, BT, IT, BIT
5/16" x 1/2" (Inside) 0.295" x 0.460"	18	N,S,M,L	C,B,W	BT, IT, BIT	WM 2608	10	N,S,M,L	C,B,W	SW-CON, SW, BT, IT, BIT
3/16" x 9/16"	3	N,S,M,L	C,B,W	SW-CON, SW, BT, IT, BIT	3/16" x 5/8" (Inside) 0.155" x 0.315"	15	N,S,M,L	C,B,W	BT, IT, BIT
3/16" x 5/8"	4	N,S,M,L	C,B,W	STB3, STB5, SW, SW-CON, MP54, BT, IT, BIT	8 x 18mm	23	N,S,M,L	C,B,W	BT, IT
1/4" x 5/8"	5	N,S,M,L	C,B,W	SW, SW-CON, BT, IT, BIT	5.5 x 25	12W	N,S,M,L	C,B,W	SW-CON, SW, BT, IT, BIT
3/8" x 5/8" (Inside) 0.275" x 0.580"	11	S,M	C,B,W	BT, IT, BIT	3/16" x 1"	12	N,S,M,L	C,B,W	SW-CON, SW, MP55, BT, IT, BIT
3/16" x 3/4"	14	S,M,L	C,B,W	SW-CON, SW, MP55, BT, IT, BIT	Extruded Muntin Bar Style & Sizes				
1/4" x 3/4"	13	S,M,L	C,B,W	SW-CON, SW, BT, IT, BIT	EM 1808 Helima	19	S,M,L	C,B,W	BT, IT, BIT
3/8" x 3/4"	16	M	C,B,W	SW-CON, SW, BT, IT, BIT	EM 2605 Helima	7F	S,M,L	C,B,W	SW-CON, SW, BT, IT, BIT
3/16" x 13/16"	21	N,S,M,L	C,B,W	SW-CON, SW, MP55, BT, IT, BIT	EM 2608 Helima	12A	S,M,L	C,B,W	SW-CON, SW, BT, IT, BIT
1/4" x 1"	10	N,S,M,L	C,B,W	SW-CON, SW, BT, IT, BIT	5.5 x 18mm All Metal	4E	S,M,L	C,B,W	SW-CON, SW, BT, IT, BIT
5/16" Round "pencil bar"	6	N,S,M,L	C,B,W	SW-CON, SW, BT, IT	8 x 18mm All Metal	4	S,M,L	C,B,W	SW-CON, SW, BT, IT, BIT
8 x 18mm "sculptured"	7	N,S,M,L	C,B,W	SW-CON, SW, MP54, BT, IT, BIT	8 x 25mm All Metal	20	N,S,M,L	C,B,W	SW-CON, SW, BT, IT, BIT
5.5 x 18mm "sculptured"	8	N,S,M,L	C,B,W	SW-CON, SW, BT, IT, BIT	8.5 x 18mm All Metal	7E	N,S,M,L	C,B,W	SW-CON, SW, BT, IT, BIT
8 x 25mm "sculptured" All Metal	12A	N,S,M,L	C,B,W	SW-CON, SW, MP55, BT, IT, BIT	Solid Vinyl Muntin Bar				
8 x 25mm "sculptured" Hy Grade	12H	N,S,M,L	C,B,W	SW-CON, SW, MP55, BT, IT, BIT	Decralite 3/32" End Hole	17	S,M,L	C,B,W	BT

Plastic Clips

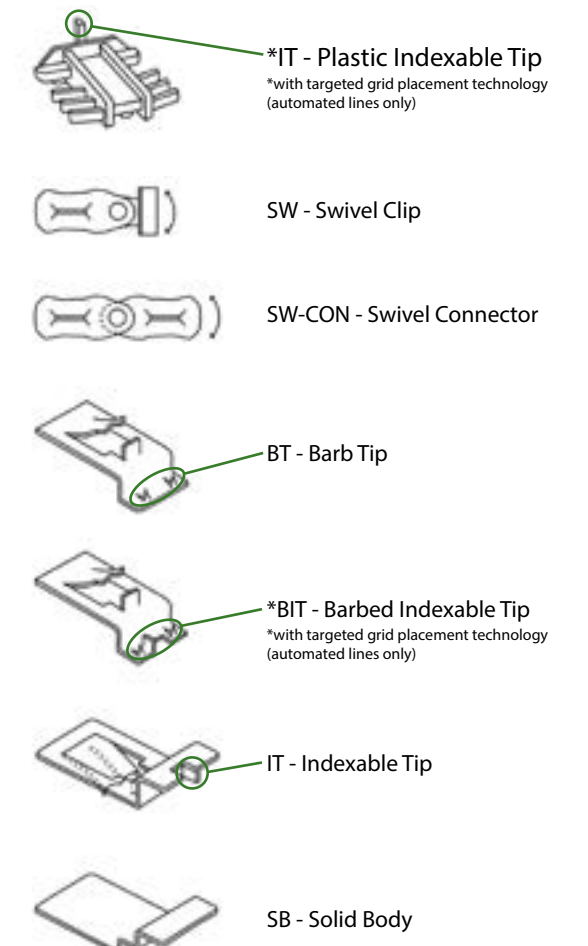
Warm Edge Clips for Fully-automated application

A B C D				
Warm Edge Muntin Bar Style & Sizes	Part #	Offset	Color	Accessories & Options
3/16" x 5/8"	4	S,M,L	P	-
1/4" x 5/8"	5	S,M,L	P	-
1/4" x 3/4"	13	S,M,L	P	-
3/16" x 13/16"	21	S,M,L	P	-
1/4" x 1"	10	S,M,L	P	-
8 x 18mm "sculptured"	7	S,M,L	P	-
5.5 x 18mm "sculptured"	8	S,M,L	P	-
3/16" x 1"	12	S,M,L	P	-
8 x 25mm	12a	S,M,L	P	-
8 x 18mm	4	S,M,L	P	-

Warm Edge Clips for Manual or Semi-automated application

A B C D				
Warm Edge Muntin Bar Style & Sizes	Part #	Offset	Color	Accessories & Options
3/16" x 5/8"	4	M	P,PBLK	BT
5.5 x 18mm "sculptured"	8	M	P,PBLK	BT
8 x 18mm	7	M	P,PBLK	BT
1/4" x 5/16" (Inside) 0.200" x 0.270"	1	M	P,PBLK	BT
1/4" x 5/8"	5	M	P,PBLK	BT
8 x 25mm "sculptured"	12A	M	P,PBLK	BT
1/4" x 1"	10	M	P,PBLK	BT

Accessories & Options



Offset Notes

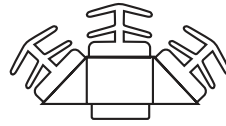
"N" Offset covers 1/4" to 3/8" air spaces
 "S" Offset covers 5/16" to 7/16" air spaces
 "M" Offset covers 1/2" to 5/8" air spaces
 "L" Offset covers 11/16" to 13/16" air spaces

Clip Colors

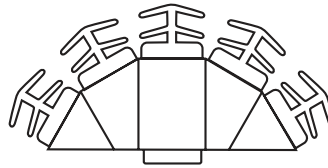
"C" Clear anodized finish
 "B" Bronze finish
 "W" White finish
 "P" Plastic, clear
 "PBLK" Plastic, black

Starbursts

	A	B	C	D
Starburst	Part # & Offset	Clip Color	Size & Starburst Color	Accessories & Options
3/16" x 5/8"	4; N,S,M,L	C,W,B	STB-3; BRZ,FWN, TAN,SAND WT,CH	BT, BIT, IT
3/16" x 5/8"	4; N,S,M,L	C,W,B	STB-5; BRZ,FWN, TAN,SAND WT,CH	BT, BIT, IT



STB3 - Starburst 3 Way



STB5 - Starburst 5 Way



Starburst Colors

"BRZ" Bronze Finish
 "FWN" Fawn Finish
 "TAN" Tan finish
 "SAND" Sand Finish
 "WT" White Finish
 "CH" Champagne Finish

Ordering Information

Create an Intelliclip Part Number

- STEP 1** In box "A" below, enter muntin bar number from selection chart, column "A"
(for starbursts, enter Part # and Offset from column "A.")
- STEP 2** In box "B" below, enter offset size from selection chart column "B".
 See "Offset Notes" for help determining proper offset.
(for starbursts, enter Clip Color from column "B.")
- STEP 3** In box "C" below, enter color from selection chart column "C".
 See "Clip Colors" at right for help determining proper color.
(for starbursts, enter Size and Starburst Color from column "C.")
- STEP 4** In box "D" below, enter options from selection charts column "D"

For your convenience, you may fax your order to Quanex IG Systems at 740.439.0121. For pricing and further inquiries, contact Quanex directly at 740.439.2338.

In some situations we may recommend samples of your muntin bar to be sent to us for determining the best fit for your application.

A	B	C	D
<input style="width: 100%; height: 30px;" type="text"/>	<input style="width: 100%; height: 30px;" type="text"/>	<input style="width: 100%; height: 30px;" type="text"/>	<input style="width: 100%; height: 30px;" type="text"/>