

**CO-EXTRUDED EXTERIOR COLOR TECHNOLOGY
12X HARDER THAN COMPETITIVE PAINT COATINGS**

Innovative Technologies. Superior Performance.



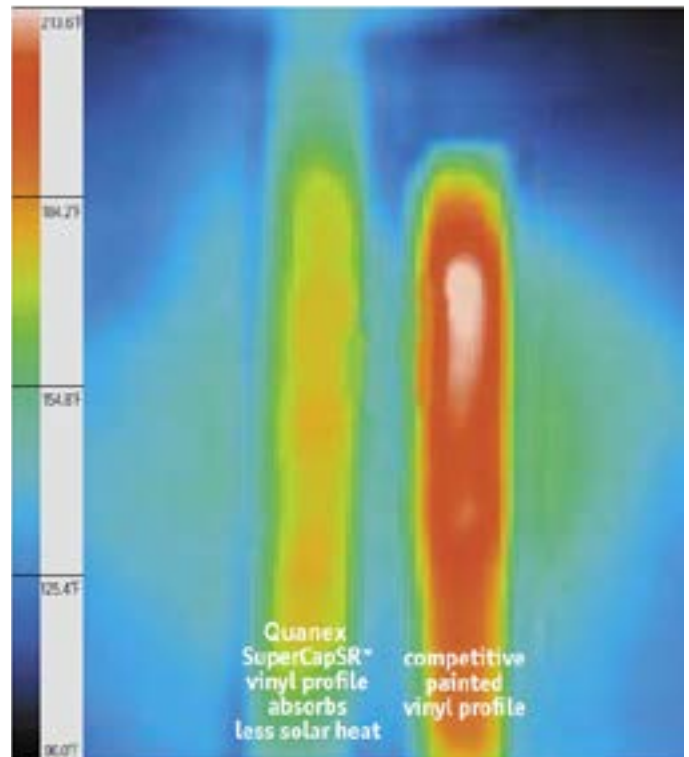
SuperCapSR™ Architectural Bronze on vinyl frame and muntins

CUTTING-EDGE COLOR TECHNOLOGY

- Superior, patent-pending, exterior color technology for vinyl and composite window and door systems.
- Proprietary solar heat-reflective performance – reflects 76% of infrared light to reduce vinyl profile heat gain; excellent fade resistance.
- Maintain profile dimension integrity by reducing solar heat build-up.
- Co-extruded process provides a permanent, molecular-bonded acrylic color layer – integral to the profile – that is highly scratch resistant.
- Durable colors will not crack, chip, flake or chalk, which is why SuperCapSR™ is backed by our industry-leading warranty.

**WHEN THE HEAT IS ON,
SuperCapSR™ PERFORMS**

Historically, darker colored vinyl windows have experienced distortion due to heat build-up; not only in hot climates, but in most direct sun exposures, especially at higher altitude. Drawing upon **military infrared heat-reflective technology**, SuperCapSR™ co-extruded exterior color technology absorbs less heat to prevent profile distortion. The SuperCapSR™ **patent-pending process** creates a tough **thermally-fused acrylic color layer** that becomes integral to the profile for superior color retention performance.



Actual lab thermal image photo

**A NEW WAY TO DIFFERENTIATE
YOUR BRAND**

Through adopting the SuperCapSR™ color technology you will further differentiate your brand, seize the opportunity to appeal among color-conscious customers, and gain a profitable up-sell opportunity.

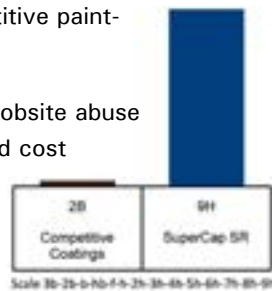


**DESIGNED TO MEET AND EXCEED
INDUSTRY QUALIFICATIONS**

- Exceeds AAMA 614 weathering standards – more than 5 years outdoor weathering exposure testing in Florida, Arizona and Kentucky, with the test specimens still maintaining color fastness.
- Exceeds AAMA 615 durability standards, testing to 12x harder than competitive paint coatings.
- Tested per ASTM D3363, D4214, D2247, D4585, D714, D523, D4726, D3359, D4803 and D968.
- Exceeds AAMA 613 color retention standards
- Profile dimensional performance and color retention are backed by our industry-leading warranty.



- Most durable color solution on the market
- Tests to 12x harder than competitive paint-applied coatings
- High scratch resistance handles jobsite abuse better than paint, saving time and cost



SUPERIOR FIELD BENEFITS

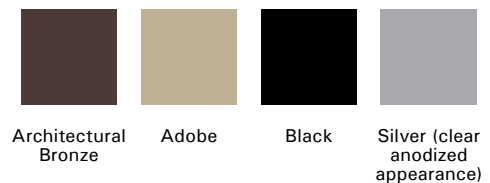
- SuperCapSR™ colors match popular clad-wood colors to provide added flexibility when developing window packages for upscale homes.
- Highly scratch-resistant color layer handles jobsite abuse better than paint, saving time and cost.
- Long-lasting colors, typically 450% + thicker than typical paint layers, will not crack, chip, flake or chalk.



SuperCapSR™ patent-pending technology creates a thermal-fused color layer that becomes integral to the profile.

COLOR RANGE

SuperCapSR™ is available in the following popular exterior colors:



Due to printing limitations, actual color may vary from printed color. View actual color samples before making color decisions.